



VOLTAMPERE

VOLTAMPERE



PRODUCT CATALOGUE 2020

www.voltampere-eu.com



VOLTAMPERE





VOLTAMPERE



ABOUT US

More about VOLTAMPERE LIGHTING

A Greece-based professional smart solution

Provider of digital lighting technology, which provides High-quality luminaires that can be expanded with Additional sensor parts, making them a source and data generating location with available connectivity whenever and wherever the customer needs.

Since our inception, we have offered state-of-the-art LED luminaires, implemented exceptional LED projects, been recognized and widely accepted by major consultants

& developers. We actively advance the technology

in order to create more energy-efficient and higher quality products for our customers.

VOLTAMPERE LIGHTING FOCUS ON:

- General Lighting and Luminaires

- Projects and Lighting Solutions

- High Customization Level

SPECIAL REQUEST FACTORY

Our special request factory provides us with unrivalled flexibility, which allows us to make very small and precise parts with ease and at speed.

LED PRODUCTION

All of our LED chips are soldered using the selective wave method, and all components and final products are thoroughly tested using precision equipment in line with stringent technical standards.

Residential

VOLTAMPERE LIGHTING residential luminaire selection is extremely wide and designed to cover all professional needs in general lighting at home as well as in public premises.

Public premises

Efficient and functional lighting enhances productivity and improves performance where ever we work. VOLTAMPERE LIGHTING public premises luminaires can be designed and installed to make the best possible lighting for each situation.

Industrial

VOLTAMPERE LIGHTING solves industrial lighting needs. Paper mill or parking hall; our efficient, wide and light technically superior portfolio suits almost everywhere.

Outdoor

VOLTAMPERE LIGHTING outdoor luminaire selection is energy efficient, long lasting and economically sustainable. We know how to light parks, squares as well as yards and parking areas.

VOLTAMPERE



CERTIFICATE



of Conformity
Low Voltage Directive 2014/35/EU

Registration No.: AN 50433471 0001
Report No.: 50168133 001

Holder: Greece Voltampere Technology Co., Ltd.
2Nd Kl Lagadas-Redine
GR.572 00 Thessaloniti,
Greece, Europe

Product: Recessed Luminaire
(LED Recessed light)

Identification: DDD035A DDD035X DDD045X DTD055W DTD055L DDD055X
DTD075C DTD075X DDY060X DDY065X DSY070X DSY075X
DDY060S DDY065S DDY085X DDY085F DDY075X DSY095X

Serial No.: n.a.
Remark : Refer to test report 50168133 001 for a details.

This certificate of conformity is based on an evaluation of a sample of the above mentioned product.
Technical Report and documentation are at the Licence Holder's disposal. This is to certify that the
tested sample is in conformity with Annex I of Council Directive 2014/35/EU, referred to as the Low
Voltage Directive. This certificate does not imply assessment of the series-production of the product
and does not permit the use of a TÜV Rheinland mark of conformity. The holder of the certificate is
authorized to use this certificate in connection with the EC declaration of conformity according to
Annex IV of the Directive.



Eileen Feng

Date 29.05.2020

TÜV Rheinland LGA Products GmbH - Tillystraße 2 - 90431 Nürnberg

CE The CE marking may be used if all relevant and effective EC Directives are complied with. CE

TUV Rheinland (China) Ltd.
Member of TÜV Rheinland Group



Greece Voltampere Technology Co., Ltd. Date : 29.05.2020
2Nd Kl Lagadas-Redine Our ref. : ILU 05
GR.572 00 Thessaloniti, Your ref.:
Greece, Europe

Ref : AN Certificate of Conf. Low Voltage D.
Type of Equipment : LED Recessed light
Model Designation : See Certificate
Certificate No. : AN 50433471 0001
Report No. : 50168133 001

Dear Nicole Liang,

We herewith confirm that a sample of the above mentioned technical
equipment has been tested and was found to be in accordance with the
relevant requirements.

Enclosed please find your Certificate of Conformity.

We appreciate your kind support and would like to offer our
assistance and continuous services in the future.

With kind regards,
Certification Body

Eileen Feng

Enclosure



VOLTAMPERE

		Ref. Certif. No. DE 2-024829
IEC SYSTEM FOR MUTUAL RECOGNITION OF TEST CERTIFICATES FOR ELECTRICAL EQUIPMENT (IECEE) CB SCHEME		
CB TEST CERTIFICATE		
Product	LED Recessed LIGHT	
Name and address of the applicant	Greece Voltampere Technology Co., Ltd. 2Nd Kl. Lagadas-Redine GR.572 00 Thessaloniti, Greece, Europe	
Name and address of the manufacturer	Greece Voltampere Technology Co., Ltd. 2Nd Kl. Lagadas-Redine GR.572 00 Thessaloniti, Greece, Europe	
Name and address of the factory	Greece Voltampere Technology Co., Ltd. 2Nd Kl. Lagadas-Redine GR.572 00 Thessaloniti, Greece, Europe	
Ratings and principal characteristics	100-240VAC, 50/60Hz; IP20, Class II For rated power, refer to the test report.	
Trademark (if any)	VOLTAMPERE	
Customer's Testing Facility (CTF) Stage used		
Model / Type Ref.	DDDaab, DTDaaab, DDYaab, DSYaab For detailed listing of variables aaa, b refer to test report.	
Additional information (if necessary may also be reported on page 2)	For model differences, refer to the test report	
A sample of the product was tested and found to be in conformity with	IEC 60598-2-2:2011 IEC 60598-1:2014 See Test Report for National Differences	
As shown in the Test Report Ref. No. which forms part of this Certificate	50168132 001	
This CB Test Certificate is issued by the National Certification Body		
	 TÜV Rheinland LGA Products GmbH Tillystraße 2 · 90431 Nürnberg, Germany Phone + 49 221 806-1371 Fax + 49 221 806-3936 Mail: cert.validity@de.tuv.com Web: www.tuv.com Date: 29.05.2020 Signature: Eileen Feng	

Business Stream Products Certification Department		 Precisely Right.
TÜV Rheinland LGA Products GmbH · 90431 Nürnberg		Contact Tel. +49 911 655-5225 Mail: service@de.tuv.com 29.05.2020
Greece Voltampere Technology Co., Ltd. 2Nd Kl. Lagadas-Redine GR.572 00 Thessaloniti, Greece, Europe		
Application for : CB-Zertifikat Certificate No. : DE 02024829 Device : Recessed Luminaire LED Recessed Light Type : see Certificate Test requirement : IEC 60598-2-2:2011 IEC 60598-1:2014 See Test Report for National Differences		
Dear Madame or Sir, The submitted sample of the product has been tested and in this configuration found to be in accordance with the above mentioned requirements. Enclosed please find the certificate No. DE 02024829.		
Kind regards Certification body Eileen Feng Test sample: no, documentation available		
TÜV Rheinland LGA Products GmbH Tillystraße 2 90431 Nürnberg Tel. +49 911 655-5225 Fax +49 911 655-5228 Mail: service@de.tuv.com Web: www.tuv.com/safety Board of Management Dipl.-Ing. Jörg Mähler, Spokesman Dipl.-Kfm. Dr. Jörg Schösser Chairman of the Supervisory Board Dipl.-Ing. Ralf Scheiler Nuremberg HRB 26013 VAT No.: DE 911635490		

9898 01 07 TÜV, TÜV and TÜV are registered trademarks. Utilization and distribution requires prior approval.



INDOOR LIGHT



01-Spot Lights
08 ~ 63 Page



02-Down Lights
64 ~ 75 Page



03-Track Lights
76 ~ 101 Page



Greece



04-Magnetic System
102 ~ 127 Page



VOLTAMPERE

VOLTAMPERE



05-Pendant Light
126 ~ 137 Page



06-Strip Light
138 ~ 167 Page



07-LED Bulb
168 ~ 175Page



VOLTAMPERE



OUTDOOR LIGHT



01-Cilling Surface Mounted
178 ~ 193 Page



02-Wall Lighting
194 ~ 203 Page



Greece



VOLTAMPERE

VOLTAMPERE



03-UnderGround light
204 ~ 219 Page



04-Bollard Light
220 ~ 223 Page

UNDERGROUND LIGHT







VAY50520



VAY50521



VAY50523



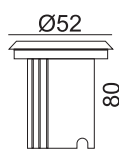
VAY50524



VAY50525

SPECIFICATION:

- All 304 stainless steel casted.
- Tempered glass diffuse.
- High quality water-proof silicone.



Mode	Voltage	Lamp	Watt
VAY50520	220V-240V~ 50Hz	Power LED	1x1W
VAY50521	220V-240V~ 50Hz	Power LED	1x1W
VAY50523	220V-240V~ 50Hz	Power LED	1x1W
VAY50524	220V-240V~ 50Hz	Power LED	1x1W
VAY50525	220V-240V~ 50Hz	Power LED	1x1W





VOLTAMPERE



VAY50730



VAY50731



VAY50733



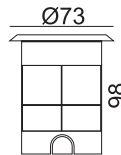
VAY50734



VAY50735

SPECIFICATION:

- All 304 stainless steel casted.
- Tempered glass diffuse.
- High quality water-proof silicone.



Mode	Voltage	Lamp	Watt
VAY50730	220V-240V~ 50Hz	Power LED	3x1W
VAY50731	220V-240V~ 50Hz	Power LED	3x1W
VAY50733	220V-240V~ 50Hz	Power LED	3x1W
VAY50734	220V-240V~ 50Hz	Power LED	3x1W
VAY50735	220V-240V~ 50Hz	Power LED	3x1W

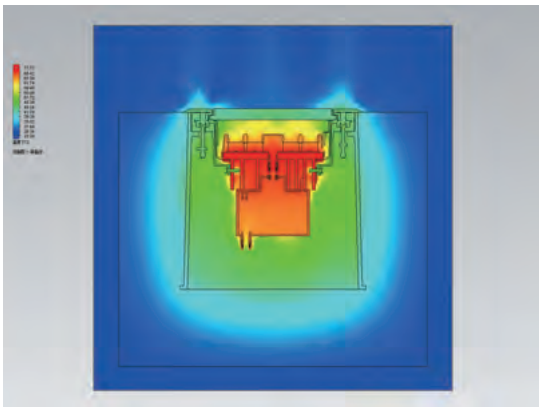
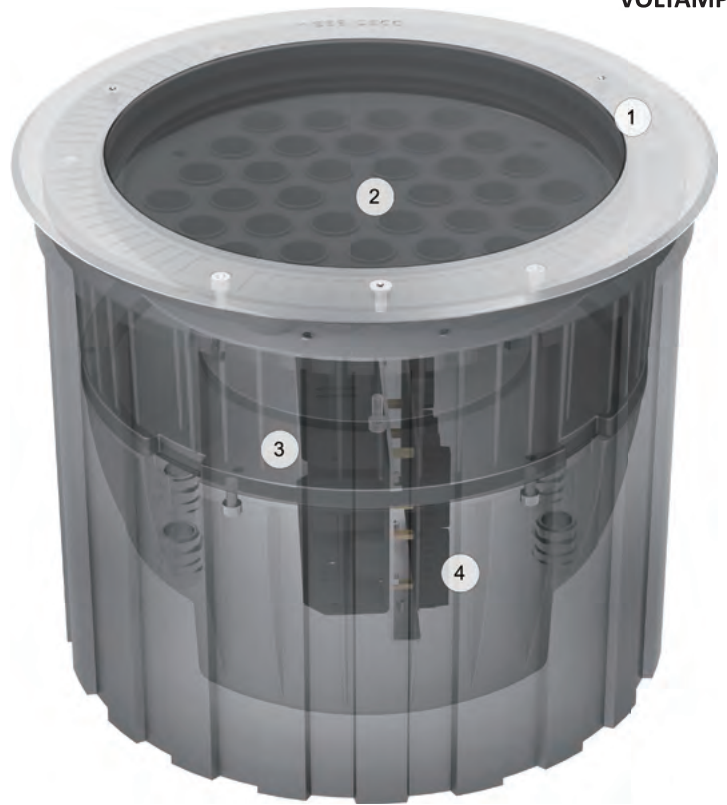
LED Drivers
PHILIPS TRIDONIC
 VOLTAMPERE

LED Chips
BRIDGELUX PHILIPS
SAMSUNG CREE





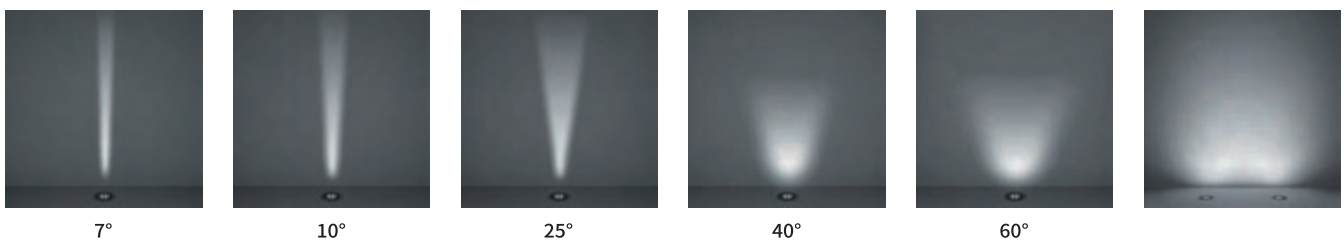
- 1.Options of 316 stainless steel covered mounted and die casting aluminum flush mounted.
- 2.Deep anti-glare louver.
- 3.Individual sealed lamp module compartment.
- 4.Individual compartment for LED driver, easy for maintaining.



excellent heat dissipation



Temperature of surface
glass≈40°C





VOLTAMPERE



Patented design of EASY TITLED device on surface trim



Static pressure loading \geq 2000kgs for Round and Square in ground luminaries



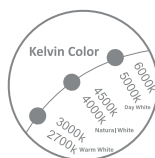
Static pressure loading \geq 500kgs for Linear in ground luminaries



Patented design of anti-condensation device attached to the external cable to stop humidity from power connection

LED Drivers
PHILIPS TRIDONIC
VOLTAMPERE

LED Chips
BRIDGELUX PHILIPS
SAMSUNG CREE



VOLTAMPERE



Material: ADC12 corrosion-resistant die-cast aluminum housing;
12mm clear safety glass;
Anti-aging waterproof silicone gasket;
304/316 stainless steel cover ring and external fasten screws;
PP Plastic recessed box

Finishing: Stainless steel

Installation: Ambient temperature: -30°C~ +45°C ;
Single Color: 1x 0.5m length 2/3-cores Ø7.0mm power supply cable;
DMX512 controllable: 1x 0.5m length 2-cores Ø7.0mm power supply cable & 2x 0.5m 4-cores Ø6.0mm data cables.
Nickled plated brass waterproof cable gland

Packaging: Net Weight: 0.8kg
Inner carton: 145x145x130mm
Outer carton: 450x305x285mm(12pcs/ctn)





VOLTAMPERE



40°C @ Ta 25°C



Anti-condensation kit



Optional Accessory
IP68 Junction box



10.0902
Aluminum cover for
Flush mounting



Flush mounting
Covered mounting

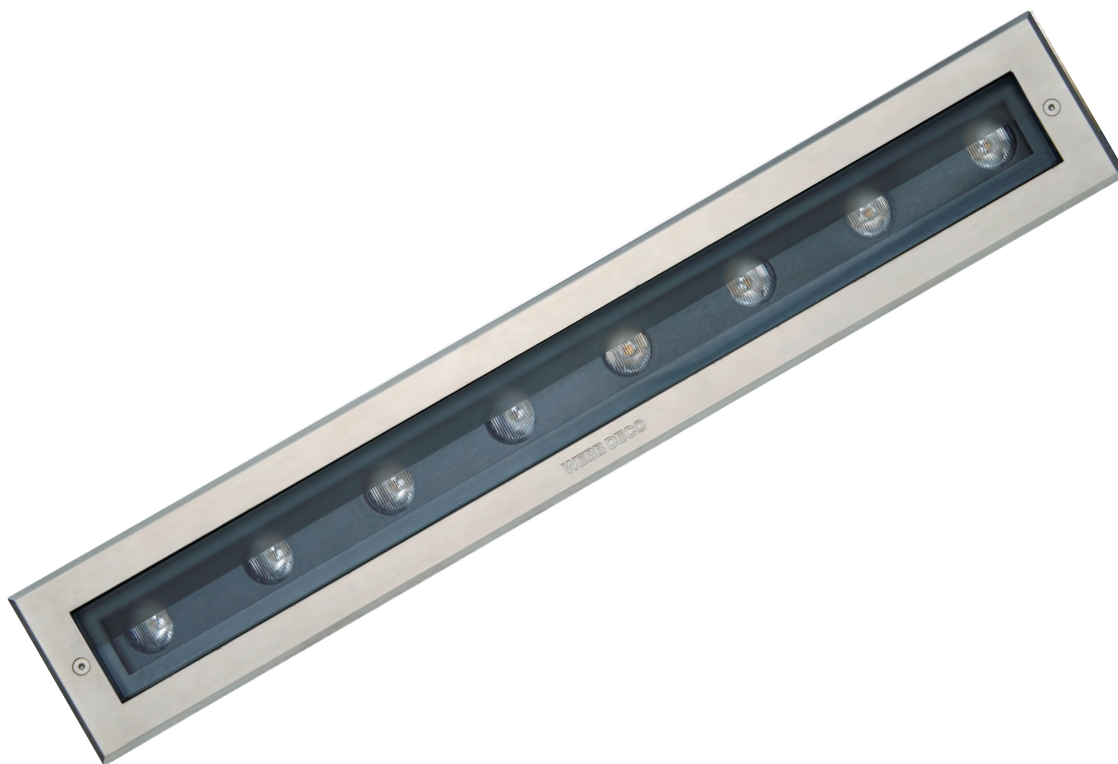


Individual gear
compartment

LED Drivers
PHILIPS TRIDONIC
VOLTAMPERE

LED Chips
BRIDGELUX PHILIPS
SAMSUNG CREE



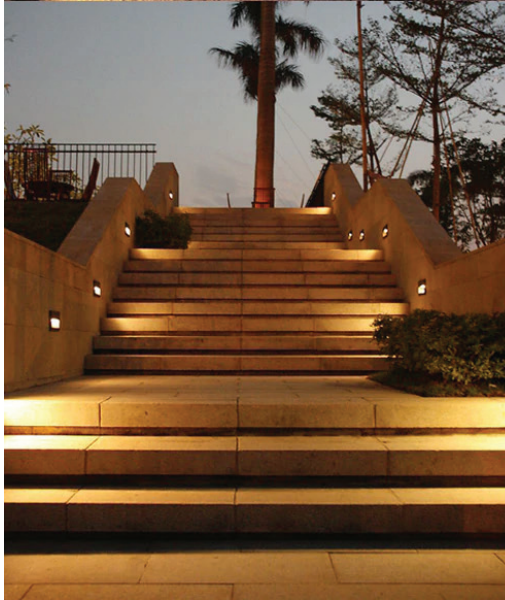


- Material:** Corrosion-resistant aluminum housing & end caps;
6mm clear safety glass;
Anti-aging waterproof silicone gasket;
304/316 stainless steel cover ring and external fasten screws.
Extrusion aluminum recessed box
- Finishing:** Stainless steel
- Installation:** Ambient temperature: -30°C~ +45°C ;
Single Color: 1x 0.5m length 2/3-cores Ø7.5mm power supply cable;
DMX512 controllable: 2x 0.5m length 2/3-cores Ø7.5mm power supply cable & 2x 0.5m 4-cores Ø6.0mm data cables with waterproof connector.
Nickled plated brass waterproof cable gland
- Packaging:** Net Weight: 4.22kg
1095x320x190mm(6pcs/ctn)

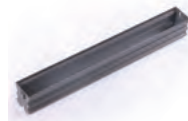




VOLTAMPERE



45°C @ Ta 25°C



Anti-condensation kit



IP68 Waterproof male-female connector



Optional Accessory IP68 Junction box



Optional frosted glass



LED Drivers
PHILIPS TRIDONIC
VOLTAMPERE

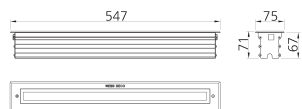
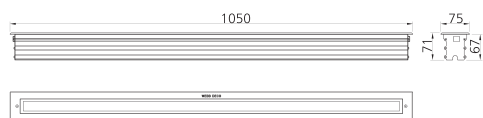
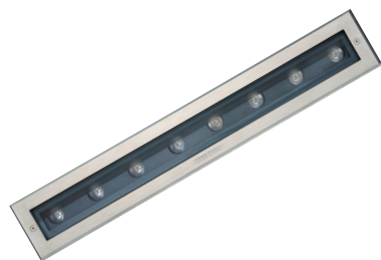
LED Chips
BRIDGELUX PHILIPS
SAMSUNG CREE



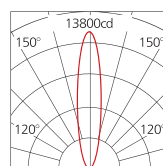
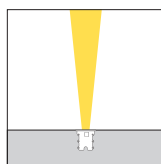


VOLTAMPERE

VA10.0931

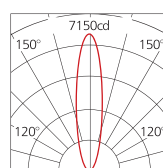
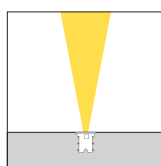


LED 20W
4000k
15°



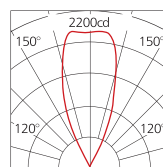
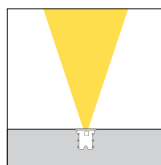
H(m)	medlux	maxlux
2.0	2352.6	3426
5.0	376.2	548.4
10.0	94.2	136.8
20.0	23.4	34.8

LED 20W
4000k
25°



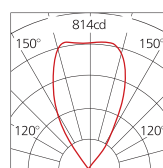
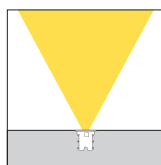
H(m)	medlux	maxlux
2.0	1200.3	1804.4
5.0	191.8	280
10.0	43.3	67.7
20.0	11	17.1

LED 20W
4000k
40°



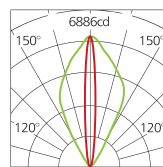
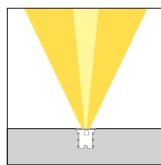
H(m)	medlux	maxlux
2.0	510.6	687.2
5.0	85.1	104.6
10.0	19.1	28.1
20.0	7.7	12.7

LED 20W
4000k
60°



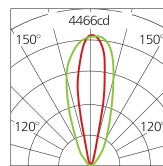
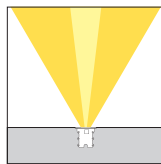
H(m)	medlux	maxlux
2.0	188.7	253.8
5.0	31.6	38.5
10.0	7	10.3
20.0	3	4.8

LED 20W
4000k
12X50°



H(m)	medlux	maxlux
2.0	5478	7260
5.0	1585.7	1802.2
10.0	330.8	454.7
20.0	151.1	201.9

LED 20W
4000k
30X65°



H(m)	medlux	maxlux
2.0	3874	4800
5.0	956.3	1199.4
10.0	238.4	300.7
20.0	106	133.7



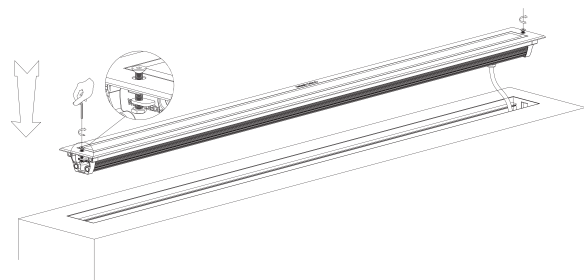
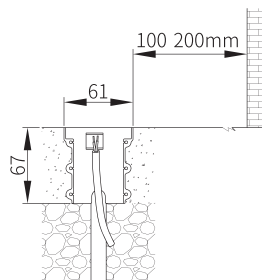


VOLTAMPERE



Model No.	LED Qty X Power	LED Color	CRI	Light source Luminous Flux @4000K	System Power	Luminaire Luminous Flux @4000K	Luminaire Efficacy	Control Mode	Beam Angle
VA10.0931. VAD18V24L1050	18X1.1W	2700K-5700K	Ra>80	2500lm	20W	1875lm	93.8lm/W	ON/OFF	15° /25° /40° /60° /12x50°
VA10.0931. VAD18V220L1050	18X1.1W	2700K-5700K	Ra>80	2500lm	24W	1875lm	78lm/W	ON/OFF	15° /25° /40° /60° /12x50°
VA10.0931. VAA18FV24L1050	18X1.1W	RGB		840lm	20W	672lm	33.6lm/W	DMX512	12x65° /30x65°
VA10.0931. VAA18FV220L1050	18X1.1W	RGB		840lm	24W	672lm	28lm/W	DMX512	12x65° /30x65°
VA10.0931. VAD9V24L547	9X1.1W	2700K-5700K	Ra>80	1250lm	10W	938lm	93.8lm/W	ON/OFF	15° /25° /40° /60° /12x50°
VA10.0931. VAD9V220L547	9X1.1W	2700K-5700K	Ra>80	1250lm	13W	938lm	72lm/W	ON/OFF	15° /25° /40° /60° /12x50°
VA10.0931. VAA9FV24L547	9X1.1W	RGB		420lm	10W	336lm	33.6lm/W	DMX512	12x65° /30x65°
VA10.0931. VAA9FV220L547	9X1.1W	RGB		420lm	13W	336lm	25.8lm/W	DMX512	12x65° /30x65°

Installation:



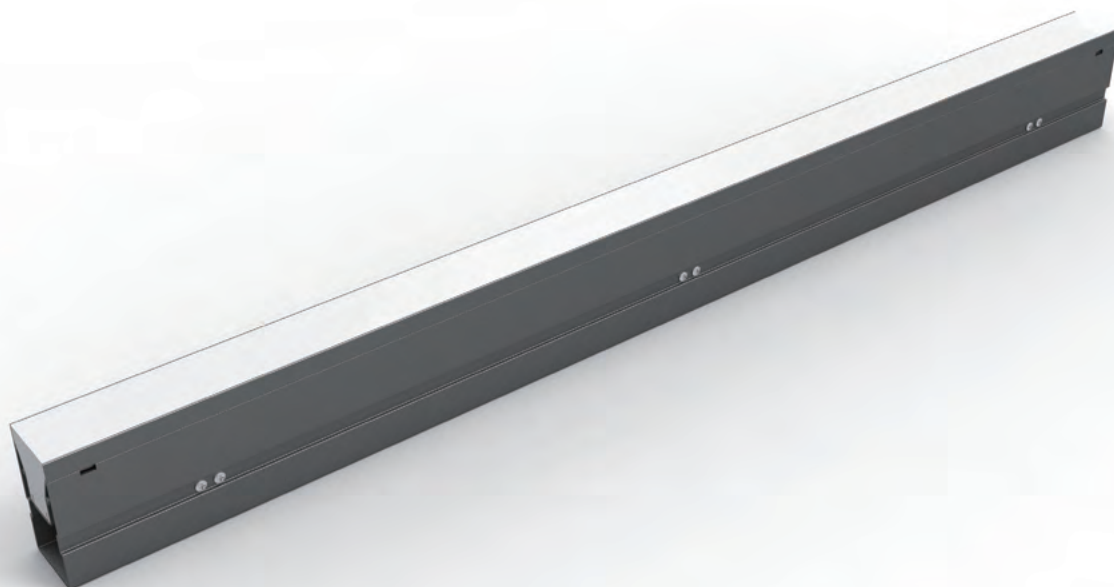
LED Drivers
PHILIPS TRIDONIC
 VOLTAMPERE

LED Chips
BRIDGELUX PHILIPS
SAMSUNG CREE



VOLTAMPERE

VA10.0934



- Material:** Corrosion-resistant aluminum housing & end caps;
 UV-resistant PU diffuser;
 304/316 external fasten screws.
 Extrusion aluminum recessed box
- Finishing:** Anodized aluminum finishing
- Installation:** Ambient temperature: $-30^{\circ}\text{C} \sim +45^{\circ}\text{C}$;
 Single Color: 1x 0.5m length 2/3-cores $\varnothing 7.5\text{mm}$ power supply cable;
 DMX512 controllable: 2x 0.5m length 2/3-cores $\varnothing 7.5\text{mm}$ power supply cable & 2x 0.5m 4-cores $\varnothing 6.0\text{mm}$ data cables with waterproof connector.
 Nickled plated brass waterproof cable gland
- Packaging:** Net Weight: 4.24kg
 1055x198x255mm(4pcs/ctn)





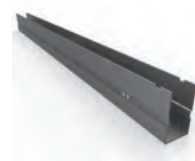
VOLTAMPERE



40°C @ Ta 25°C



500Kg



Anti-condensation kit



IP68 Waterproof male-female connector



Optional Accessory IP68 Junction box



Continuous installation

LED Drivers
PHILIPS TRIDONIC
VOLTAMPERE

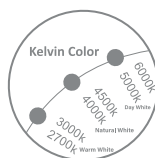
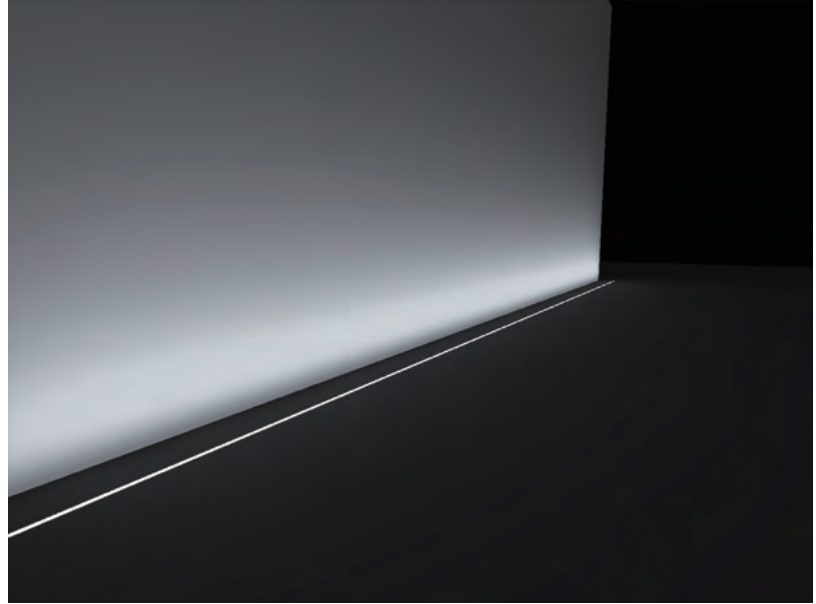
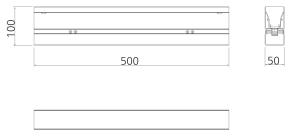
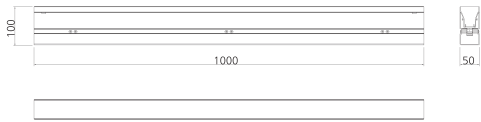
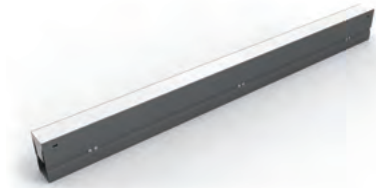
LED Chips
BRIDGELUX PHILIPS
SAMSUNG CREE



VOLTAMPERE 217



VA10.0934



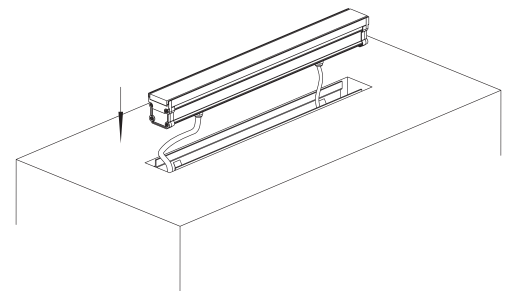
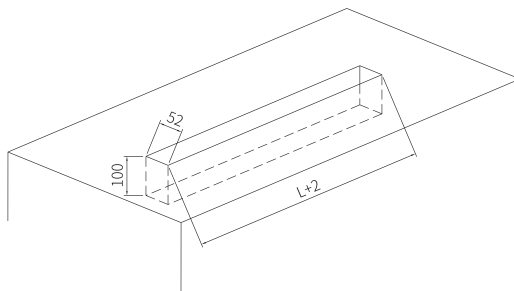


VOLTAMPERE



Model No.	LED Qty X Power	LED Color	CRI	Light source Luminous Flux @4000K	System Power	Luminaire Luminous Flux @4000K	Luminaire Efficacy	Control Mode	Beam Angle
VA10.0934.D60V24L1000	60X0.17W	2200K-5700K	Ra>80	1250lm	10W	625lm	62.5lm/W	ON/OFF	120°
VA10.0934.D60V220L1000	60X0.17W	2200K-5700K	Ra>80	1250lm	13W	625lm	48lm/W	ON/OFF	120°
VA10.0934.D60FV24L1000	60X0.17W	RGB		420lm	10W	210lm	21lm/W	DMX512	120°
VA10.0934.D60FV220L1000	60X0.17W	RGBW		420lm	13W	210lm	16.1lm/W	DMX512	120°
VA10.0934.D30V24L500	30X0.17W	2200K-5700K	Ra>80	625lm	5W	312.5lm	62.5lm/W	ON/OFF	120°
VA10.0934.D30V220L500	30X0.17W	2200K-5700K	Ra>80	625lm	6.5W	312.5lm	48lm/W	ON/OFF	120°
VA10.0934.D30FV24L500	30X0.17W	RGB		210lm	5W	105lm	21lm/W	DMX512	120°
VA10.0934.D30FV220L500	30X0.17W	RGBW		210lm	6.5W	105lm	16.1lm/W	DMX512	120°

Installation:



LED Drivers
PHILIPS TRIDONIC
 VOLTAMPERE

LED Chips
BRIDGELUX PHILIPS
SAMSUNG CREE





VOLTAMPERE



2Nd KL Lagadas-Redine
GR.572 00 Thessaloniti,
Greece, Europe

Contact us:
T:+ 30 690 898 9002
E: info@voltampere-eu.com

www.voltampere-eu.com